

TOTAL SYSTEM HIGHLIGHTS

Current Year Systemwide Enrollment

Mennonite educational institutions are touching the lives of 14,191 students (based on headcount) in 2009, a decrease of 382 (-2.6%) students from the 2008 total of 14,573. In higher education the total headcount increased by 148 students (seminary 24, graduate 61, adult degree completion 76, and undergraduate -13) while elementary and secondary education levels show a significant decline of 530. Please note that in 2009 elementary and secondary (preK-12) enrollment is based on 36 schools reporting, while 2008 enrollment numbers are based on 35 schools reporting.

Current Year Systemwide Mennonite Enrollment

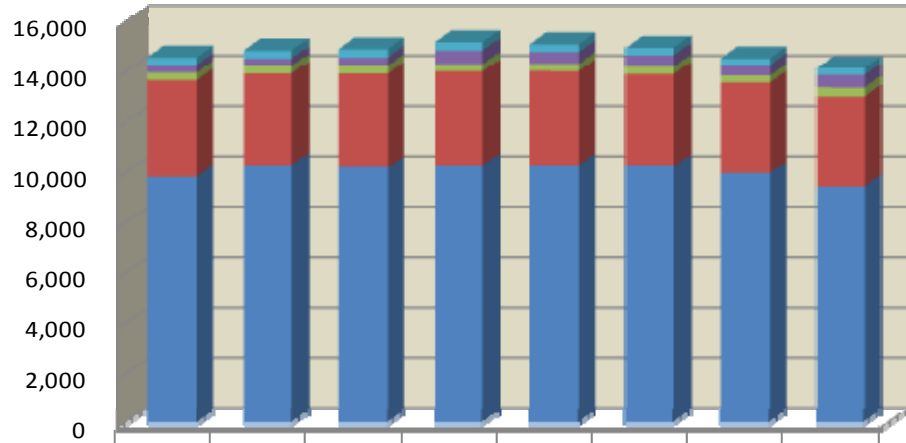
“Mennonite Church USA” students include only those that report attending a Mennonite Church USA congregation. All other Mennonites are included in the “All Mennonite” category. Note that the number of Mennonite Church USA students in higher education increased from 2008 to 2009 (except for undergraduate) for a combined decrease of 20 while preK-12 decreased 72 for a total net decrease of 92.

One-Year Mennonite Church USA Full-time Enrollment Changes from 2008-09 to 2009-10

Mennonite Church USA students	Fall 2008	Fall 2009	1-yr Change	Pct Change
Undergraduate	1,382	1,319	-63	-4.6%
Adult degree-completion	10	15	5	50.0%
Graduate	26	56	30	115.4%
Seminary	54	62	8	14.8%
PreK-12	<u>2,766</u>	<u>2,694</u>	<u>-72</u>	<u>-2.6%</u>
Total Mennonite Church USA enrollment	4,238	4,146	-92	-2.2%

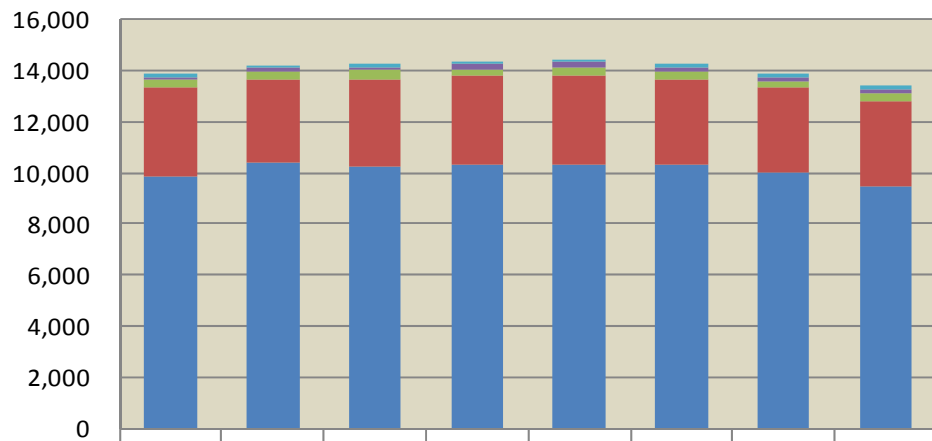
Systemwide Enrollment Trends, PreK through Seminary

Total Enrollment Headcount by Educational Level



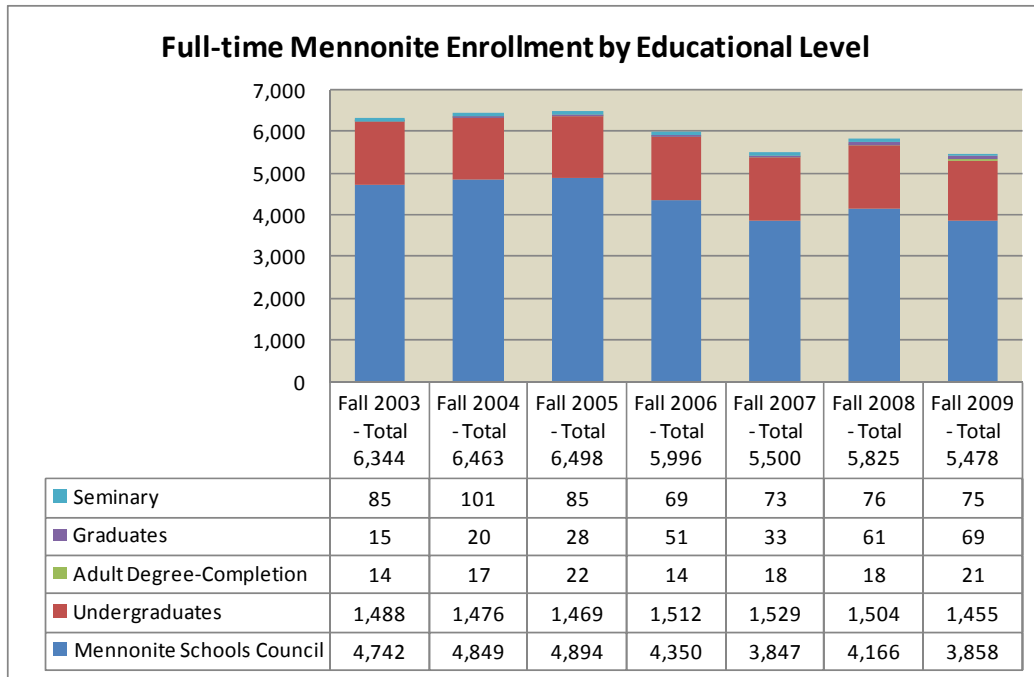
	Fall 2002 - Total	Fall 2003 - Total	Fall 2004 - Total	Fall 2005 - Total	Fall 2006 - Total	Fall 2007 - Total	Fall 2008 - Total	Fall 2009 - Total
Seminary	291	314	323	317	306	296	258	282
Graduates	316	293	324	546	459	451	430	491
Adult Degree-Completion	302	313	325	292	298	302	279	355
Undergraduates	3,841	3,614	3,725	3,726	3,714	3,664	3,601	3,588
Mennonite Schools Council	9,859	10,351	10,238	10,325	10,349	10,277	10,005	9,475

Full-Time Enrollment by Educational Level



	Fall 2002 - Total	Fall 2003 - Total	Fall 2004 - Total	Fall 2005 - Total	Fall 2006 - Total	Fall 2007 - Total	Fall 2008 - Total	Fall 2009 - Total
Seminary	119	139	140	127	112	110	125	121
Graduates	97	100	135	177	188	161	162	187
Adult Degree-Completion	302	313	325	292	298	295	261	277
Undergraduates	3,488	3,310	3,443	3,445	3,475	3,397	3,328	3,323
Mennonite Schools Council	9,859	10,351	10,238	10,325	10,349	10,277	10,005	9,475

Systemwide Mennonite Enrollment Trends, PreK through Seminary



Multi-year Mennonite Full-time Students as Percentage of Total Enrollment, 2004-2009

In 2009, Mennonite Church USA students comprise 31.1% of the total full-time MEA enrollment, and full-time all Mennonites account for 41.1% of the total full-time MEA enrollment. Full-time enrollment percentages from fall 2004 to 2009 are included for comparative purposes. The Mennonite student population for the total MEA enrollment breaks out as follows:

Mennonite Church USA

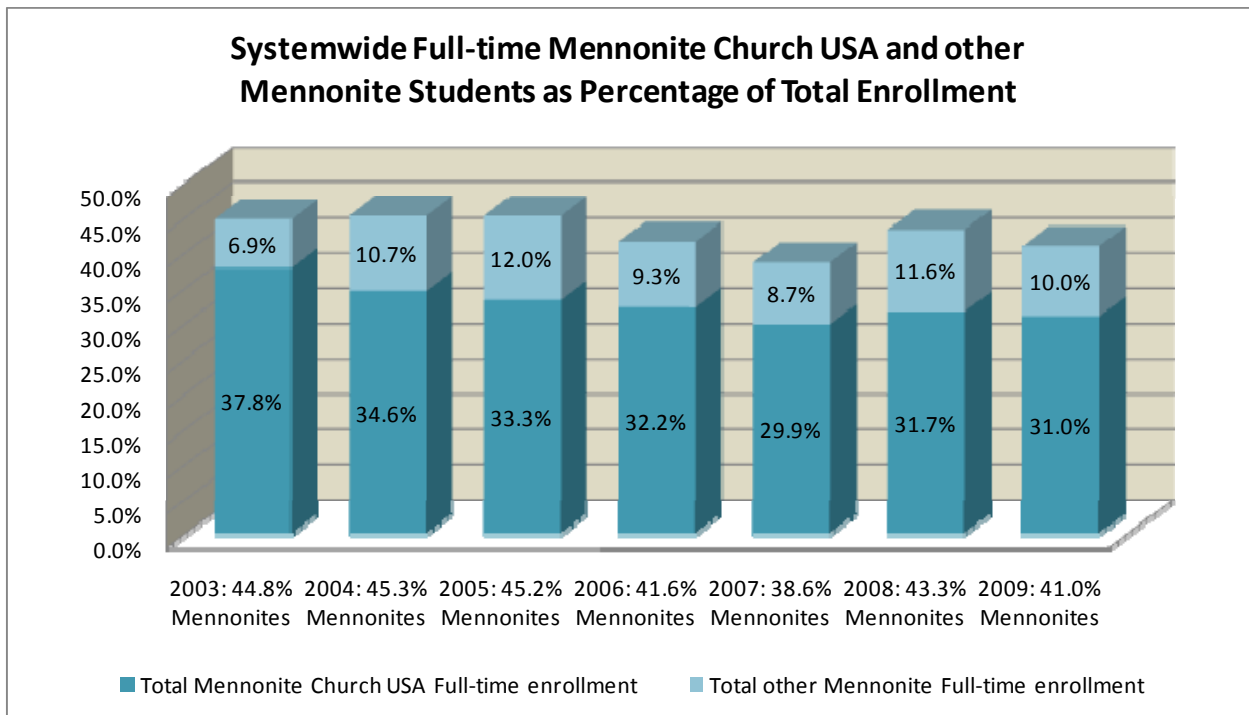
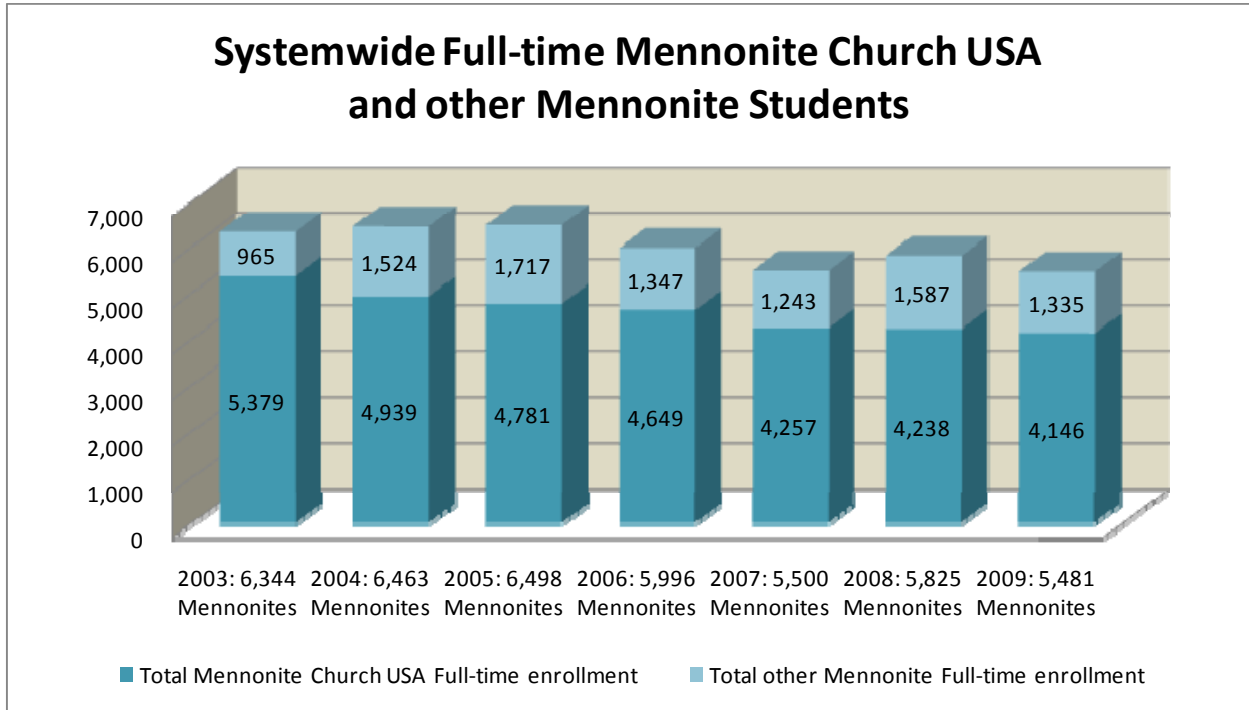
	<u>Fall 2004</u>		<u>Fall 2005</u>		<u>Fall 2006</u>		<u>Fall 2007</u>		<u>Fall 2008</u>		<u>Fall 2009</u>	
Undergraduate	1,361	39.5%	1,384	40.2%	1,398	40.2%	1,383	40.7%	1,382	41.5%	1,319	39.7%
Adult degree-completion	11	3.4%	17	5.8%	10	3.4%	5	1.7%	10	3.8%	15	5.4%
Graduate	16	11.9%	22	12.4%	45	23.9%	26	16.2%	26	16.1%	56	30.0%
Seminary	80	57.1%	65	51.2%	58	51.8%	54	49.1%	54	43.2%	62	51.2%
PreK-12	3,471	33.9%	3,293	31.9%	3,138	30.3%	2,789	27.1%	2,766	29.1%	2,694	28.6%
Summary total	4,939	34.6%	4,781	33.3%	4,649	32.2%	4,257	29.9%	4,238	31.7%	4,146	31.1%

All Mennonites

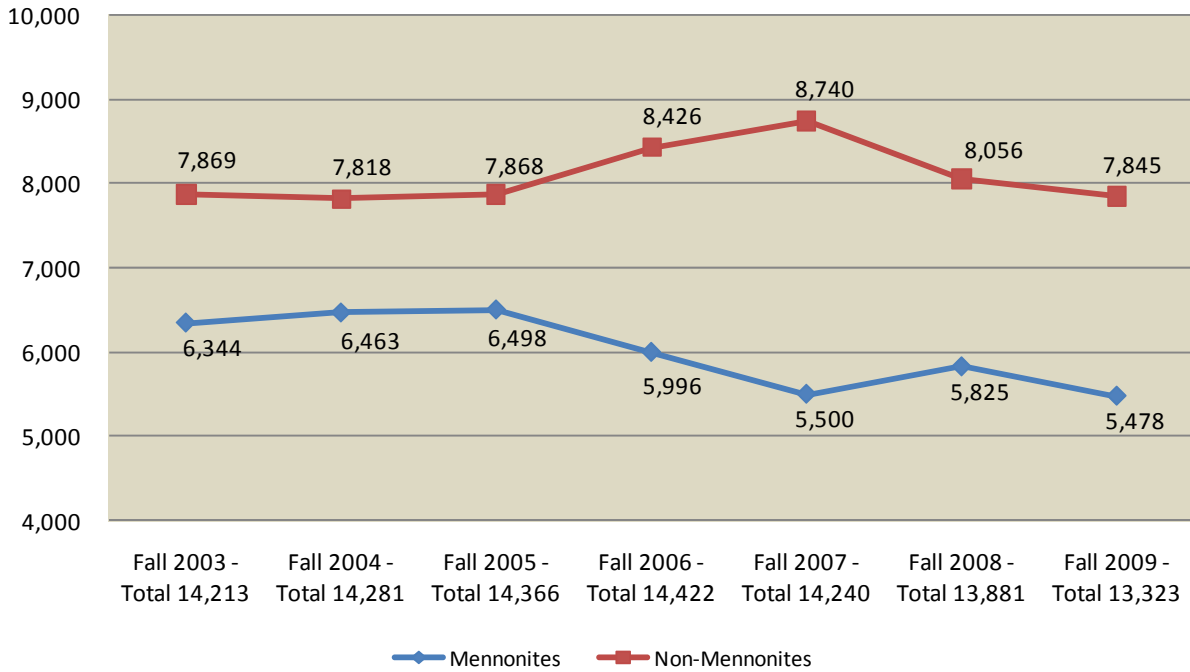
	<u>Fall 2004</u>		<u>Fall 2005</u>		<u>Fall 2006</u>		<u>Fall 2007</u>		<u>Fall 2008</u>		<u>Fall 2009</u>	
Undergraduate	1,476	42.9%	1,469	42.6%	1,512	43.5%	1,529	45.0%	1,504	45.2%	1,455	43.8%
Adult degree-completion	17	5.2%	22	7.5%	14	4.7%	18	6.0%	18	6.9%	21	7.6%
Graduate	20	14.8%	28	15.8%	51	27.1%	33	20.5%	61	37.7%	69	36.9%
Seminary	101	72.1%	85	66.9%	69	61.6%	73	66.4%	76	60.8%	75	62.0%
PreK-12	4,849	47.4%	4,894	47.4%	4,350	42.0%	3,847	37.4%	4,166	41.6%	3,858	41.0%
Summary total	6,463	45.3%	6,491	45.2%	5,996	41.6%	5,500	38.6%	5,825	42.0%	5,478	41.1%

An interesting observation may be made by carefully examining the Mennonite Schools Council (MSC) PreK-12 data on these tables. Under the Mennonite Church USA table, the decline in Mennonite students may be partly addressed through the realignments that took place as congregations changed denominational affiliations between fall 2004 and fall 2009.

You may note that the total number of all Mennonites attending higher education institutions basically did not change from 2004 to 2009 (from 1,614 to 1,620). However, two areas of higher education (adult degree-completion from 17 to 21, and graduate from 20 to 69) experienced some increase, while decreases occurred in the other two areas (undergraduate from 1,476 to 1,455 and seminary from 101 to 75) during the same time period.



Systemwide Total Full-time Mennonites and Non-Mennonites by Headcount



Systemwide Total Full-time Mennonites and Non-Mennonites by Percentage

